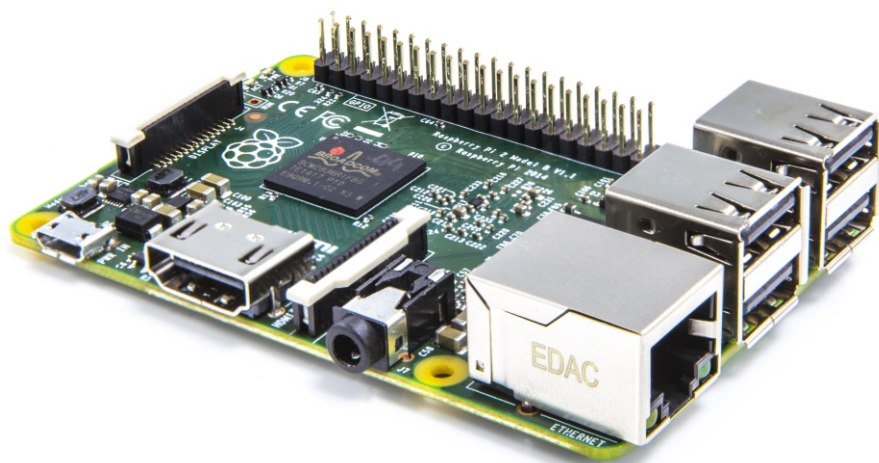


CANAKit RASPBERRY PI QUICK-START GUIDE



CanaKit[™]

WWW.CANAKit.COM

WELCOME!

Congratulations on your purchase from CanaKit and welcome to the exciting world of the Raspberry Pi! To setup your Raspberry Pi, you will typically need the following items:

- MicroSD Card (pre-loaded with NOOBS* recommended)
- HDMI monitor
- HDMI cable
- USB Keyboard and Mouse
- MicroUSB Power Adapter
- [Optional] Ethernet cable for connection to a wired network
- [Optional] A case to hold and protect your Raspberry Pi

If you purchased one of CanaKit's Raspberry Pi Starter Kits, it will include many of the above items depending on the specific kit.

** NOOBS is designed to make it easy to select and install operating systems for the Raspberry Pi without having to worry about manually imaging your MicroSD card.*

CANAKit WARRANTY REGISTRATION

Your purchase comes with a CanaKit Limited Warranty. In order to take advantage of this warranty, you must activate it within 30-days of purchase by registering at:

www.canakit.com/warranty

UPDATES

The Raspberry Pi and corresponding software is constantly evolving with frequent changes and revisions. Therefore, some screen-shots shown in this guide may look different depending on the specific version of the software. For the latest version of this guide, please refer to:

www.canakit.com/quick-start/pi

SUPPORT & RESOURCES

At CanaKit, we would like to ensure your complete satisfaction. If you purchased a kit from us, please inspect the contents of your kit and do not hesitate to contact us should you have any issues. You can reach us at:

help@canakit.com

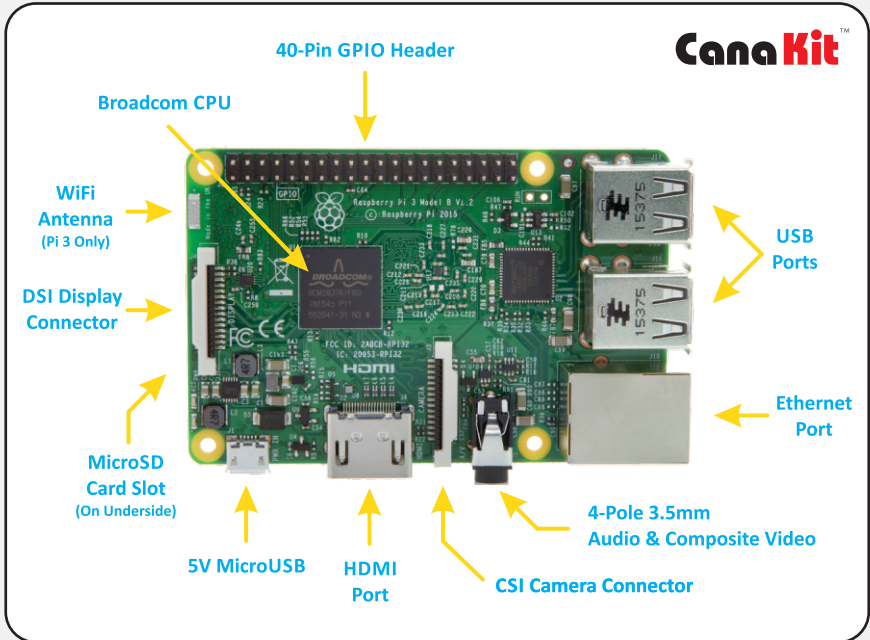
To learn more about the Raspberry Pi, refer to the Raspberry Pi Foundation Resources page at:

www.raspberrypi.org/resources

For Raspberry Pi related technical support, a great place to start is the official Raspberry Pi Foundation forums at:

www.raspberrypi.org/forums

GETTING STARTED



1. If you have a case, start by installing the Raspberry Pi inside the case. You can find video instructions for CanaKit Raspberry Pi cases at:

www.canakit.com/pi-case

2. Insert a MicroSD card pre-loaded with NOOBS into the MicroSD card slot on the bottom side of the Raspberry Pi. If you don't have a pre-loaded MicroSD card you can find instructions on how to make one at:

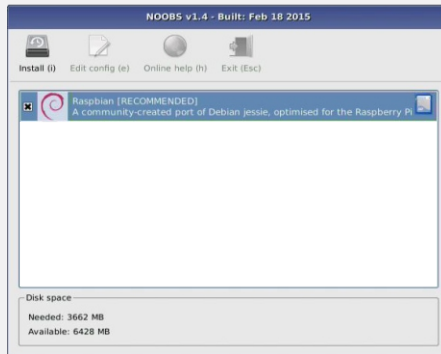
www.raspberrypi.org/help/noobs-setup

3. Connect a USB keyboard and mouse to the USB ports.

4. Connect a HDMI monitor or TV to the Raspberry Pi using a HDMI cable. Ensure your monitor or TV is turned on and that you have selected the correct input.

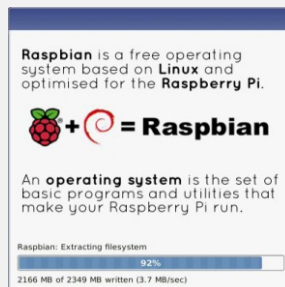
5. If you intend to use an Operating System other than Raspbian, connect the Raspberry Pi to your network using an ethernet cable. If a wired Internet connection is detected, you will be presented with additional choices of Operating Systems. **Please ensure the Operating System that is selected is compatible with the version of the Raspberry Pi you are using.**

6. Once all connections have been made, it is now time to connect the power adapter to the board. When the power is connected, the Raspberry Pi will start to boot and you should be presented with the following menu.



Note: Once an Operating System has been installed, the NOOBS menu will no longer appear. If you need to get back to the NOOBS menu, press and hold the SHIFT key on your keyboard when turning on the Raspberry Pi.

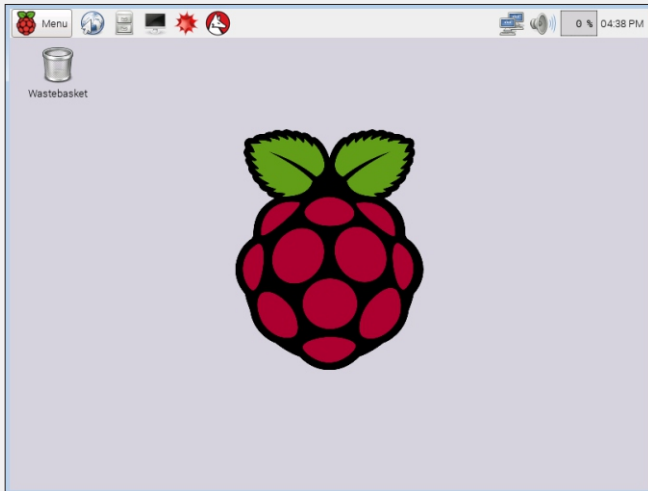
7. Select “Raspbian” or your choice of Operating System(s) from the menu. Click “Install” to begin the installation process.



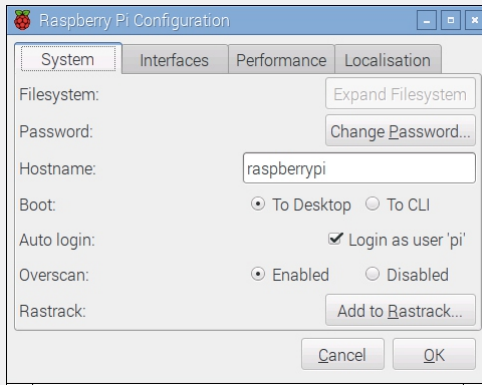
8. NOOBS will now start the installation of the selected Operating System(s). This process will take a few minutes. Once completed, you will see a message indicating the installation has completed. Press OK and the Raspberry Pi will reboot.

RASPBIAN JESSIE

Starting with Version 4.1 of Raspbian (code-named Raspberry Jessie), the Raspberry Pi will automatically boot straight to the graphical desktop interface and not to the Linux command line.



The first time you start your Raspberry Pi, it is recommended to launch the Raspberry Pi Configuration application in order to set system configuration parameters, such as default Password, Hostname, Locale, Timezone and Keyboard Layout. This tool can be found under the Preferences entry under the Main Menu.



SHUTTING DOWN THE RASPBERRY PI

Like any computer, it is very important that the Raspberry Pi be shutdown properly so that the MicroSD card File System is not corrupted. If you are in the graphical desktop interface, you can simply click “Menu” and then select “Shutdown”. On the other hand, if you are in the command line interface, you can type the following command:

```
sudo shutdown -h now
```



© 2016 Cana Kit Corporation. All Rights Reserved.

Raspberry Pi is a trademark of the Raspberry Pi Foundation. CanaKit is a registered trademark of Cana Kit Corporation. This manual is copyright of Cana Kit Corporation. No part of this manual may be sold, licensed, transferred, copied or reproduced in whole or in part in any manner or form in or on any media without the prior written consent of Cana Kit Corporation.

Revision 2.1

CanaKit[™]

WWW.CANAKIT.COM